

# Welcome/Introductions/ Network Update

---

Margaret W. Gitau, Ph.D.

Associate Professor of Agricultural & Biological Engineering

Purdue University

Founding President

Mentoring neTwork for African Women in Academia



# About MTAWA

---

**Establish and build networks** for African women in academia in support of their **academic and professional growth and success**



# About MTAWA

---

**Mission:** *Empower* African women to succeed in graduate and professional programs through targeted recruitment, mentoring, and career development support.

**Vision:** *Increase* the number of African women with advanced degrees and improve their representation in key leadership positions across multiple sectors including but not limited to government, academia, industry, civil society, and international organizations.

2

Early career mentees in faculty positions



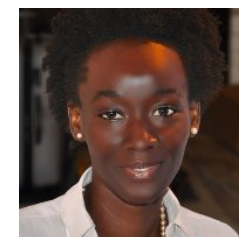
4

Mentees with PhDs



53

Rapidly growing student body



3

Years old in September



# Awards/Promotions/News



***Redempter Mutinda***  
***Egerton University, Kenya***

MTAWA [Pauline W.Kinuthia]  
Outstanding Graduate Student  
Award (2019)



Bilsland Dissertation  
Fellowship



Fellow, African Academy of  
Sciences



Award for Public Service  
Promotion to Full Professor



Seeds of Success Award  
31 Purdue Women

# Going Forward

---

- 1) Expand MTAWA's reach across Africa (mentors, mentees, partners)
- 2) Deepen relationships among members and partners (sustainability)
- 3) Raise funds for the Network (sustainability, continued success)

# Going Forward

---

- 4) Offer financial support to students and early career mentees (increase opportunities, chances of success)\*
- 5) Develop and/or support regional groups (access to networks)
- 6) Provide a variety of mentoring opportunities (mentoring models).

# Program

---

- Audience: mix of students, early career, and seasoned professionals
- Intent: we hear from ourselves
  - Perspectives
  - Experiences
  - Concerns
  - Current work
  - Collaboration opportunities
- Program Details



# Acknowledgements

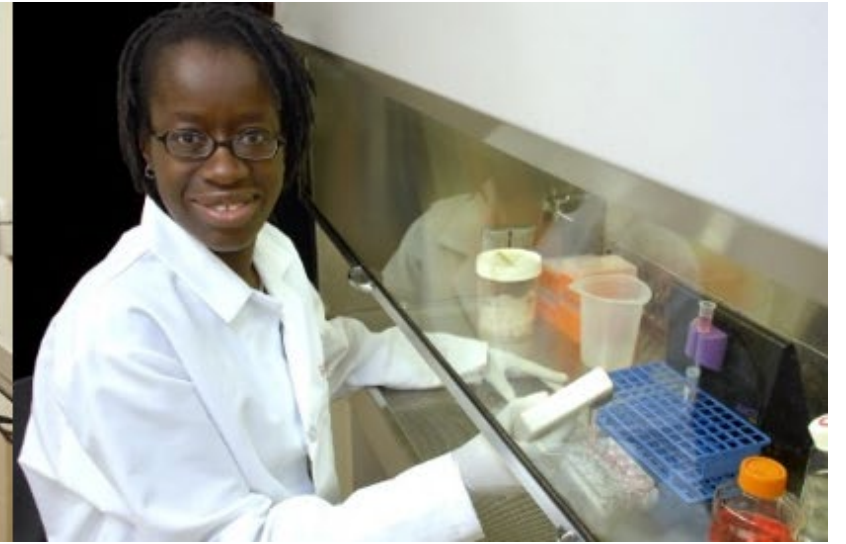
---

Back page of program

**Dr. Elizabeth Quansah**, Director, Outreach Global. Auburn University (Keynote Speaker)

**Dr. Margaret Okomo-Adhiambo**, CDC and MTAWA (finding venues, negotiating prices, all other background work)

**Dr. Senorpe Asem-Hiablle**, Penn State University and MTAWA (put the bulk of the program together, topic & discussion points).



mtawainc@gmail.com  
<https://mtawainc.org>

mgitau@purdue.edu  
[web.ics.purdue.edu/~mgitau](http://web.ics.purdue.edu/~mgitau)